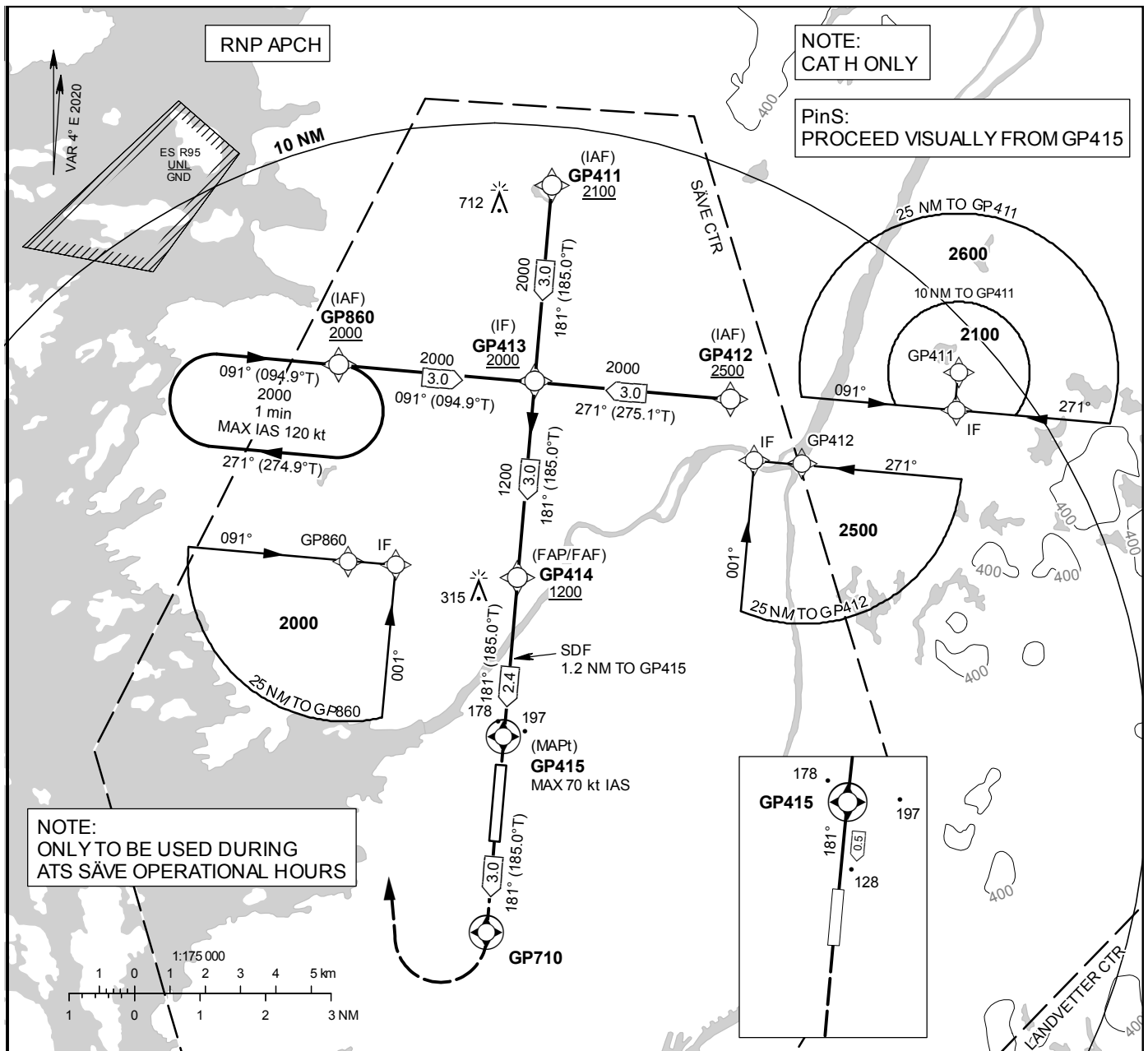


GÖTEBORG/Säve**INSTRUMENT
APPROACH
CHART – ICAO****THR ELEV 48 ft, AD ELEV 59 ft**OCH are related to THR.
BRG are MAG (True).
ALT, HGT and ELEV in ft.

SÄVE TOWER

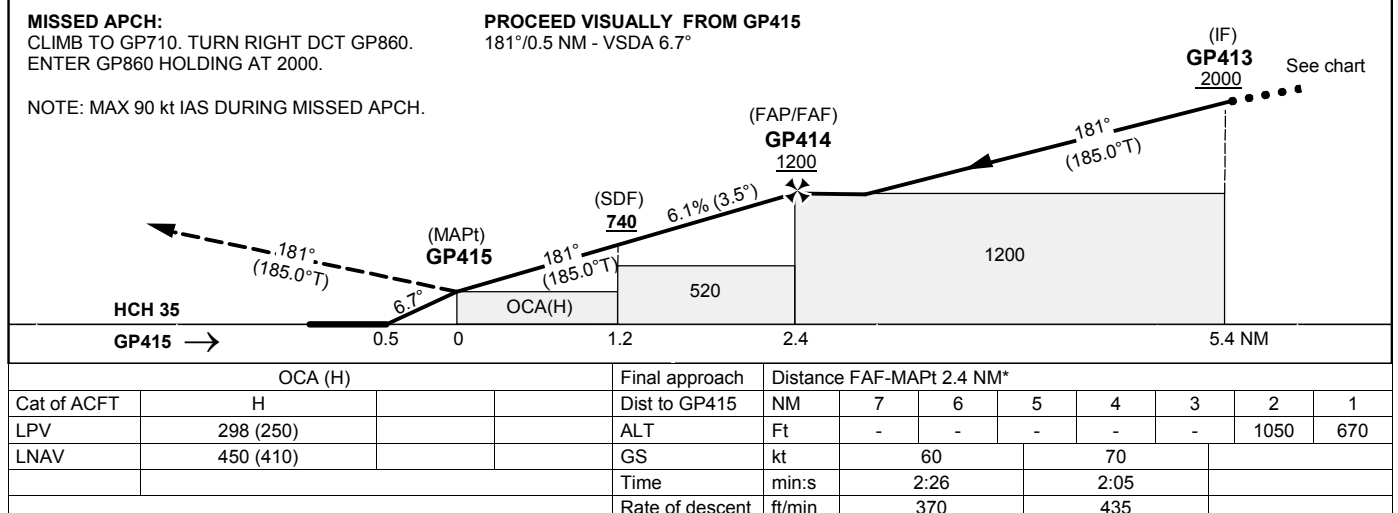
119.055

RNP 181 (LPV, LNAV only)**EGNOS Ch89927 E18A****TA 5000 ft AMSL*****Timing not authorized for defining MAPt****MISSED APCH:**CLIMB TO GP710. TURN RIGHT DCT GP860.
ENTER GP860 HOLDING AT 2000.

NOTE: MAX 90 kt IAS DURING MISSED APCH.

PROCEED VISUALLY FROM GP415

181°/0.5 NM - VSDA 6.7°



OCA (H)				Final approach	Distance FAF-MAPT 2.4 NM*							
Cat of ACFT	H			Dist to GP415	NM	7	6	5	4	3	2	1
LPV	298 (250)			ALT	Ft	-	-	-	-	-	1050	670
LNAV	450 (410)			GS	kt	60		70				
				Time	min:s	2:26		2:05				
				Rate of descent	ft/min	370		435				

CHANGE: Editorial

GÖTEBORG/Säve

RNP 181

SN	Path Desc	WPT ID	Fly-over	Course °M(°T)	Mag Var	Dist (NM)	Rec Navaid	Turn Dir	ALT (ft)	Speed (kt)	VPA	Arc Centre Radius	Nav Spec
010	IF	GP860	-	-	-4.0	-	-	-	+2000	-	-	-	RNP APCH
020	TF	GP413	-	-	-4.0	3.0	-	-	+2000	-	-	-	RNP APCH
010	IF	GP411	-	-	-4.0	-	-	-	+2100	-	-	-	RNP APCH
020	TF	GP413	-	-	-4.0	3.0	-	-	+2000	-	-	-	RNP APCH
010	IF	GP412	-	-	-4.0	-	-	-	+2500	-	-	-	RNP APCH
020	TF	GP413	-	-	-4.0	3.0	-	-	+2000	-	-	-	RNP APCH
030	TF	GP414	-	-	-4.0	3.0	-	-	+1200	-	-	-	RNP APCH
040	TF	GP415	Y	-	-4.0	2.4	-	-	-	-70	-3.5	-	RNP APCH
060	TF	GP710	Y	-	-4.0	3.0	-	-	-	-90	-	-	RNP APCH
070	DF	GP860	-	-	-4.0	-	-	R	2000	-	-	-	RNP APCH
080	HM	GP860	-	091°(094.9°T)	-4.0	1 min	-	R	+2000	-120	-	-	RNP APCH

Note: Recommended RNAV procedure coding is based on ARINC 424-15 and is provided solely to indicate which procedure design protection areas were used in the Instrument Flight Procedure Design process.

Note: Published OCA(H) values are obstacle clearance values. Decision heights (DH) below 250 ft shall not be used due to approach operation Type A limitations.

FAS Data Block

RNP 181

Operation Type	0
SBAS Provider	1
Airport Identifier	ESGP
Runway	RW18
Approach Performance Designator	0
Route Indicator	-
Reference Path Data Selector	0
Reference Path Identifier	E18A
LTP/FTP Latitude	574704.8430N
LTP/FTP Longitude	0115218.8665E
LTP/FTP Ellipsoidal Height	50.3
FPAP Latitude	574538.0630N
FPAP Longitude	0115204.6410E
Threshold Crossing Height	27.3
TCH Units	M
Glide path Angle	3.5
Course Width at threshold	105
Length Offset	0
Horizontal alert limit (HAL)	40
Vertical alert limit (VAL)	35
PRECISION APPROACH PATH CRC REMAINDER	FD2B8F26

NON FAS DATA BLOCK FIELDS

LTP Orthometric Height	14.6
FPAP Orthometric Height	14.6